



# ADVOCACY AND ACCOUNTABILITY:

COUNTRY EXPERIENCE UTILIZING THE #UPROOT SCORECARD FOR AYKP-LED ADVOCACY AND ACCOUNTABILITY TO INFLUENCE POLICY PROCESSES

19 June 2024 (Wednesday) | 09:00 AM (EST) | 09:00 PM (PST)

# ADVOCACY & ACCOUNTABILITY

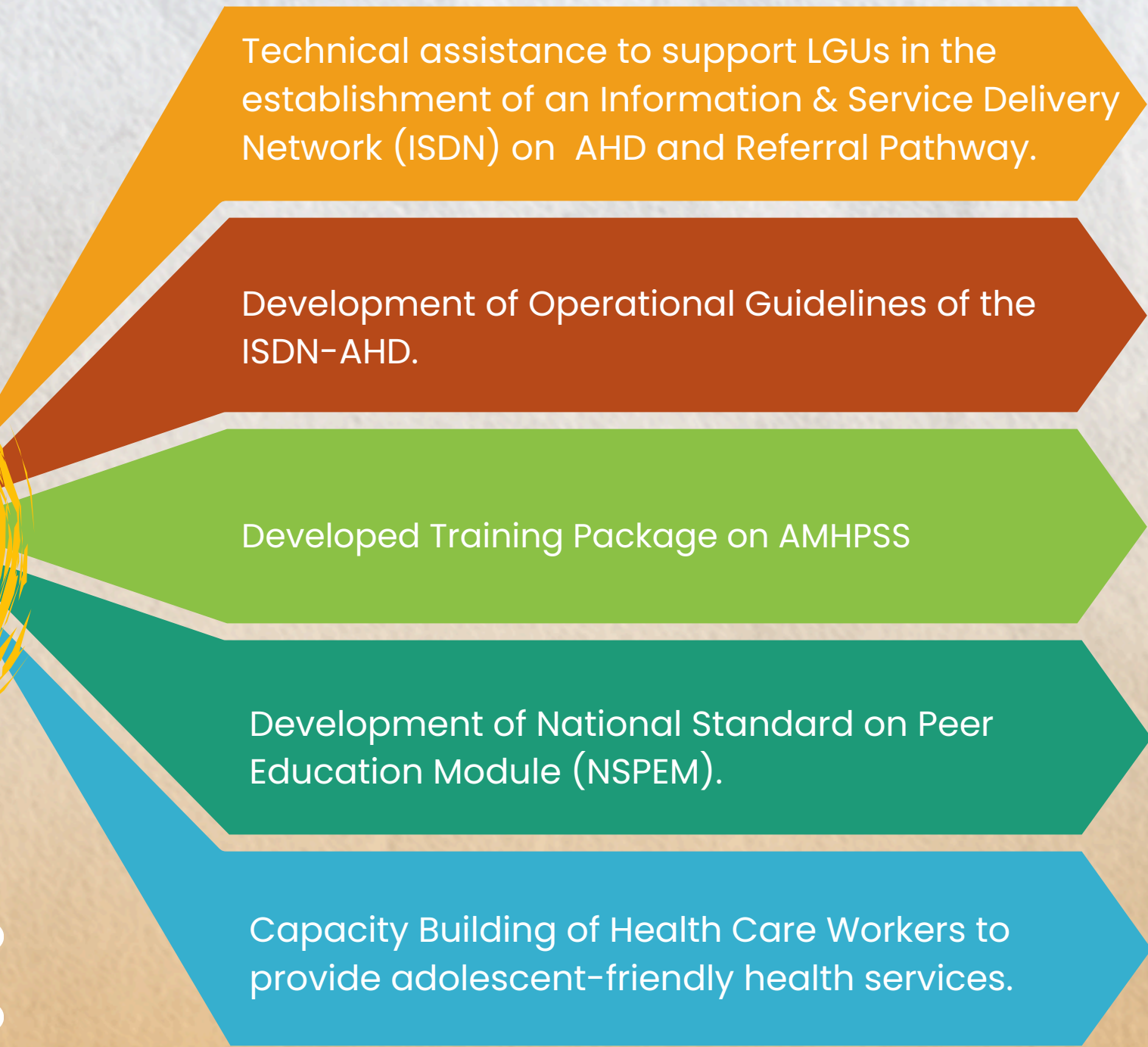


## CSE-ARH Convergence for Alternative Learning System (ALS)

- In partnership with the Department of Health and Department of Education with funding support from UNICEF Philippines.



### Health Component



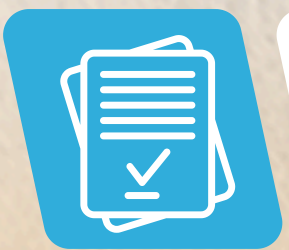
## Education Component



Development of Teaching and Learning Resource Package (TLRP) on CSE-ARH with DepEd.



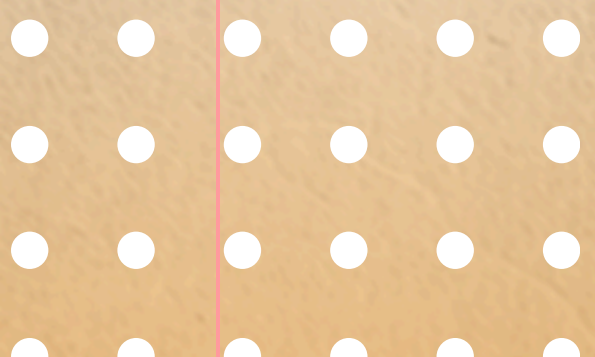
Field Validation and Pilot Testing



Finalization of the TLRP



Capacity Building Training of ALS Teacher



# ADVOCACY & ACCOUNTABILITY

Joint Program on Accelerating the Reduction on Adolescent Pregnancy (JPARAP)

## Adolescent-Friendly Mobile Health Facility (AFMHF)

A mobile health facility that provides comprehensive adolescent health services in the community. populations (ayKP) through a co-creation workshop and series of consultation.

Bring the Adolescent Health Services closer to the community.

Co-created by adolescent and young key populations (ayKP) through a co-creation workshop and series of consultation.



# The range Hub



The Orange Hub is an innovative and comprehensive adolescent and youth health facility designed to address the unique needs of adolescents and young people aged 10-24 years.

This facility provides a safe, stigma-free, and welcoming environment where adolescents can access sexual and reproductive health services, HIV/AIDS, mental health and psychosocial support (MHPSS), and other health and non-health services such as employment, technical and livelihood skills, social protection, and education.

It also includes resources and referral mechanisms through the ISDN-AHD for coping with gender-based violence.

The Orange Hub aims to improve the health and well-being of adolescents by offering tailored, non-judgmental, youth-centric health services that are accessible, confidential, and respectful.

# ADVOCACY & ACCOUNTABILITY

Joint Program on Accelerating the Reduction on Adolescent Pregnancy (JPAP)

## Capacity Building of Health Care Workers

- Mapping of Health Care Facilities and Inventory of Capacity Building of Health Care Workers to guide UN-TWG, Y-PEER PH, and DOH Regional Field Office together with the Provincial Health Office to prioritize capacity building of health care workers, particularly on AHD, Community-based HIV Screening, and Basic Emergency Maternal Obstetrics and Newborn Care (BEMONC).
- Capacity building on Social and Behavior Change (SBC) for health care workers



# OUR DREAM DESTINATION

Harm Reduction for ayPWU/ID

HIV Treatment, Care and Support for Children Pedia

Professionalization of Peer Education as part of the Health Care System

Nationwide Capacity Building Training for ALS Teachers on CSE-ARH

Youth Participation on Climate Change and Disaster Preparedness

Pre-Exposure and Prophylaxis (PrEP) for minors



# BACKGROUND



National Community Consultation for the Uproot Scorecard 2.0 last September 7, 2022 (Wednesday) held at the United Nations (UN) Country Office, Mandaluyong City, Metro Manila Philippines

Due to the existing COVID-19 health protocol of the Government and budget constraints, the consultation was conducted in a hybrid format.

The National Community Consultation for the Uproot Scorecard was attended by a total of 15 participants (10 online and 5 on-site) who are coming from diverse identities and sub-groups of adolescent and young key populations such as young MSM, young transgender, young sex workers, young PLHIV



# THANK YOU!!!

## CONTACT INFORMATION:

UNIT 3B, CEH GOLDEN RED BUILDING 626,  
Sultan St., Brgy., Highway Hills,  
Mandaluyong City, Metro Manila, Philippines  
Email: [secretariat@ypeerph.org](mailto:secretariat@ypeerph.org)



[ypeerphilipinas](https://www.facebook.com/ypeerphilipinas)



[ypeerph](https://www.instagram.com/ypeerph)



[secretariat@ypeerph.org](mailto:secretariat@ypeerph.org)